

HOW WE'RE RESPONDING TO COVID-19



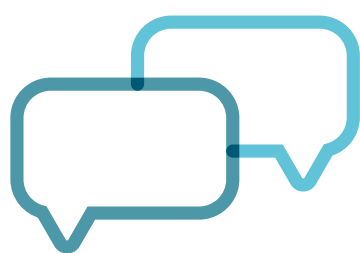
IS YOUR WORKPLACE SAFE?

60% Agree or Strongly Agree their workplace is safe. (**18%** were neutral)

22% Disagreed.

WHAT CAN WE DO BETTER?

Top recommendations were: limit public access to facilities (**80%**), have cleaning supplies handy (**78%**), and have barriers between employees (**37%**), and between employees and the public (**58%**).



HOW FREQUENTLY DO YOU WANT UPDATES?

39% said only when there is critical news and **33%** said daily.

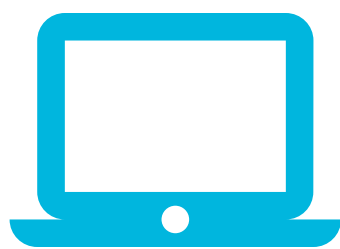
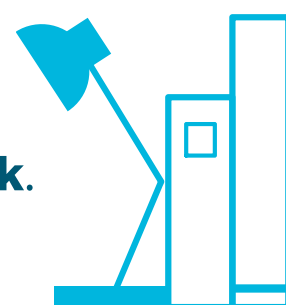
The Friday Manager's Message provides weekly updates via email

WHAT ABOUT ONLINE SCHOOL?

28% said it would be a challenge for them this fall. **25%** said online school would impact them **1 day a week.**

14% said it would impact them **5 days a week.**

(For 7%, 3 days - for 2-4% 2 or 4 days a week)



IS REMOTE WORK WORKING?

156 people agreed or strongly agreed it was. (**15** were neutral and **5** people disagreed)

Some barriers: communications, supplies, technology, and interacting with the public.

RESOURCES

EAP 1-800-326-3864 or bhsonline.com

OMSBUD 919-265-0806 or omsbud@townofchapelhill.org

HRD - 919-968-2700

THE HIVE thehive.townofchapelhill.org

